

# Introducing the 2025-26 Cohort of Kenan Fellows

## Alamance-Burlington



**Sybil Robinson**

**Hugh M. Cummings High School Fellowship:** *An Exploration of Cellular Biology with Dr. Amy Maddox at UNC Chapel Hill*

## Alexander County Schools



**Paige Jackson**

**Alexander Central High School Fellowship:** *Computational Thinking with Hope Murdock & Brittany McPeters at Baxter Healthcare*

## Asheville City Schools



**Gretchen Ross**

**Asheville Middle School Fellowship:** *Western NC with Suzi Palladino and Danielle Rauchenisen at ASAP*

## Carteret County Schools



**Matthew Turpin**

**Morehead Middle School Fellowship:** *North Carolina Resiliency with Liz DeMattia at Duke University Marine Lab*

## Chapel-Hill Carrboro



**Matthew Murchison-Blake**

**Carrboro High School Fellowship:** *Clean Energy with Dana Haine at the UNC Center for Public Engagement with Science*

## Chapel-Hill Carrboro



**Bill Vincent**

**East Chapel Hill High School Fellowship:** *Clean Energy with Andrew McMahan and Tiffany Breindel at the EARTH Center*

## Charlotte-Mecklenburg



**Atiba D. Bethea Sr.**

**Mallard Creek High School Fellowship:** *Clean Energy with April Weaver, Eddie Darrisaw and Cori Summers at Siemens Energy*

## Charlotte-Mecklenburg



**Jasmine Smith**

**Olympic High School Fellowship:** *Clean Energy with April Weaver, Eddie Darrisaw and Cori Summers at Siemens Energy*

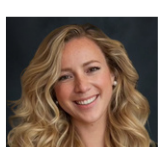
## Cherokee Central



**Trista Williams**

**Cherokee Elementary School Fellowship:** *Computational Thinking with Tina Whitfield and Layla Wolf-Chlupsa at Harrah's Casino*

## Craven County Schools



**Elsa Simmons**

**Tucker Creek Middle School Fellowship:** *Expanding the STEM Pipeline with Michelle Smith and Randall Lewis at FRC East*

## Craven County Schools



**Segonia Wade**

**JT Barber Elementary School Fellowship:** *Core Sound Waterfowl Museum with Karen Amspacher and Catherine Norris.*

## Duplin County Schools



**Tanya Novakowski**

**Rose Hill-Magnolia Elementary Fellowship:** *Clean Energy with John Garner at Williamsdale Extension and Research Farm*

## Durham Public Schools



**Nelly Coba Basile**

**Sherwood Githens Middle School Fellowship:** *North Carolina Resiliency with Liz DeMattia at Duke University Marine Lab*

## Durham Public Schools



**Alexis Moore**

**Ignite Online Academy Fellowship:** *Clean Energy with Caroline Finklea Sullivan and Morgan Crawford at NCBCE*

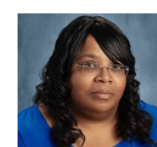
## Durham Public Schools



**Myriama Smith Traore**

**C. E. Jordan High School Fellowship:** *NC Heritage with Ronda Taylor Bullock, Sierra Gibbs and Alfred Mays at WE ARE and Burroughs Wellcome*

## Edgecombe Public Schools

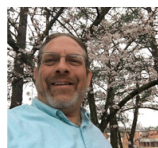


**Tammy Hedgepeth**

**Princeville Elementary School Fellowship:** *Computational Thinking with Batt Masterson and Lorie Harrell at Hitachi Astemo*

# Introducing the 2025-26 Cohort of Kenan Fellows

## Guilford County Schools



**Mark  
Case**

**Southern Guilford High Fellowship:** *Computational Thinking with Holly Love, Suzy Adkins and Sandra Lannert at Honda Aircraft*

## Halifax County Schools



**Jody  
Washington**

**Northwest Collegiate and Technical Academy Fellowship:** *Clean Energy with Mozione Lowe and Shana Brown at Center for Energy Education*

## Henderson Schools



**Maggie  
DeCorah**

**Atkinson Elementary School Fellowship:** *NC Apples with Heather Morton at NC Farm Bureau Ag in the Classroom*

## Johnston Schools



**Grant  
Shoaf**

**Johnston County Early College Academy Fellowship:** *(NMR) Spectroscopy with Alexander Nevzorov at NC State*

## Onslow County Schools



**Kelly  
Dillman**

**Onslow County Schools Fellowship:** *Computational Thinking with Ryan Ellis at the National Weather Service*

## Orange County Schools



**Xavier  
Adams**

**Orange High School Fellowship:** *NC Heritage with Deanna Townsend-Smith, Ashley Kazouh and Alfred Mays at the Dudley Floyd Center and Burroughs Wellcome Fund*

## Pitt County Schools



**Laurel  
Currie**

**Pitt County Early College Fellowship:** *Clean Energy with Gery Boucher and Jeff Schulze at the Volt Center*

## Polk County Schools



**Tiffany  
Dennis**

**PEAK After School Fellowship:** *NC Center for Afterschool Programs with Carol Steen of Biltmore Farms*

## Polk County Schools



**Rebekah  
Morse**

**Polk Central Elementary School Fellowship:** *Clean Energy with Eric Grant, Lee Spruill and Brian Maccarelli at Blue Ridge Power*

## Robeson Public Schools



**Sarah  
Griffin-Greene**

**Rowland-Norment Elementary Fellowship:** *Empower Educators with Tyler Oxendine, Ruby Clark and Chris Nault at Lumbee River EMC and NC's Electric Cooperatives*

## Robeson Public Schools



**Connie  
Locklear**

**Indian Education Program Fellowship:** *NC Heritage with Kerry Bird, Christie Norris and Alfred Mays at N.C. Dept. of Cultural Resources and Burroughs Wellcome Fund*

## Rutherford Schools



**Jeny  
Keeter**

**Pinnacle Elementary School Fellowship:** *Western NC with Pam Torlina and Julianne Johnson at Conserving Carolina*

## Sampson County Schools



**Michael  
Giddens**

**Hobbs Middle School Fellowship:** *Clean Energy with Eric Grant, Lee Spruill and Brian Maccarelli at Blue Ridge Power*

## Wake Public Schools



**Abigail  
Hester**

**Mills Park Middle School Fellowship:** *Genetics and Genomics Academy with Jeff Yoder and Dan Merselis at NC State*

## THANK YOU 2025-26 DONORS

BelleJAR Foundation, Burroughs Wellcome Fund, Dogwood Health Trust, Duke Energy, Henderson County Farm Bureau, Lumbee River EMC, Meta, NC. Center for Afterschool Programs, NCDEQ, NC DNCR NCDPI, North Carolina's Electric Cooperatives, NC Farm Bureau, NC Farm Bureau Ag in the Classroom, NC State, PBS NC, UNC-Chapel Hill, and individual philanthropic support